

access



By plane

Approx. 4 minutes by taxi or bus from Tottori Sand Dunes Conan Airport to Kanikko Kuko Road (via Pref. Road 327)

By bus

Take a Hinomaru bus from JR Tottori Station to Kanikkokan-mae bus stop on the Karo Junkan Route (approx. 42 min).

By car

- Approx. 20 min from JR Tottori Station
- Approx. 4 min from Tottori Sand Dunes Conan Airport
- Approx. 20 min from Tottori IC on Tottori Expwy.



Free admission!!

Hours	9:00 a.m. – 5:00 p.m. (Last admission: 4:45 p.m.)
Closed	Tuesdays (except the following days) * If a Tuesday is a national holiday, the Aquarium will be open that Tuesday and closed the following day. * The Aquarium opens each day from Mar. 24 to Apr. 8, from July 20 to Aug. 31, and from Dec. 24 to Jan. 8.
Fee	Free (Parking is also available free of charge.)
Welfare facilities	Nursing room, multipurpose toilet (ostomate-accessible), audio guides, tactile ground surface indicators, and other equipment
Available equipment	Wheelchairs and strollers
27-2 Nishi 3-chome, Karo-cho, Tottori City 680-0908	
Fax	0857-31-0199
URL	https://www.kanikko.jp
Tel	0857-38-9669

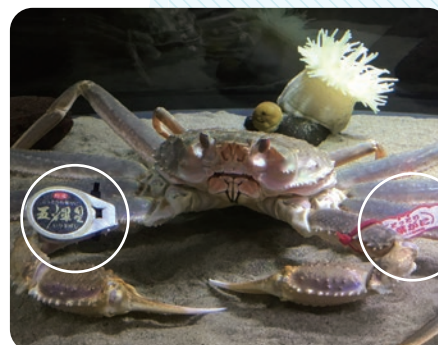
Tottori Karo Crab Aquarium is managed and operated by the Tottori Tourism Agency (general incorporated foundation).



Access from your mobile phone.

Crabs in Tottori Prefecture

©Matsubagani crab fishing is done from early November to March in the large waves of the Sea of Japan in winter.



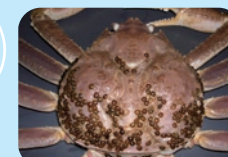
● Reliable brand tag

Itsukiboshi

Itsukiboshi crabs are sold as the top brand of Tottori matsubagani crabs, meeting strict standards for size, quality, shape, and other criteria. These crabs are precious, accounting for only 0.01% of all matsubagani crabs.

Matsubagani crab (Snow crab)

Male adult snow crabs, called *matsubagani* in Japan, are filled with meat and have rich umami or savory taste. This crab is a representative winter delicacy in Tottori.



● Dark spots on the shell

These spots are the egg capsules of crab leeches, which deposit their eggs on a shell of a crab. The larger the number of the eggs attached to a shell, the longer the period that has passed since molting and therefore the more the crab's shell is stuffed with meat.

Beni-zuwaigani crab

The number of beni-zuwaigani crabs landed at Sakai Port in the western part of Tottori Prefecture is the largest in Japan.

©Beni-zuwaigani crab fishing is done from early September to the end of June the following year.



Oyagani crab (Snow crab)

Female snow crabs, called *oyagani* in the San-in region, are smaller than male snow crabs and often used for crab miso soup. (The crab is also called *kobakogani* and *seikogani* in other regions.)

Male snow crabs soon after casting off their shells are called *waka-matsubagani*. Their shells are soft and their meat is very moist. They are sold at reasonable prices, so local residents love them.

Recognized by Guinness World Records!
World-class crab!!



A matsubagani crab, which had landed at Tottori Port in November 2018 and auctioned at a price of two million yen, was awarded a Guinness world record as a crab auctioned at the highest price in the world.

A crab weighing 1.28 kg with a shell 14.6 cm wide was certified as an Itsukiboshi crab, the premier brand of Tottori Prefecture.

The Crab Aquarium showcases a variety of crabs, such as huge crabs, tiny crabs, and venomous crabs.

Crab picture book

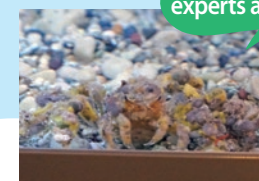


Hey! Though I might look cute,

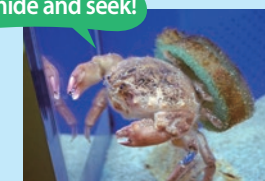


▲ Floral egg crab

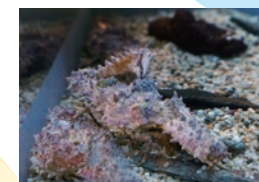
We are experts at hide and seek!



▲ Decorator crab



▲ Japanese sponge crab



▲ Elbow crab



▲ Red-clawed crab



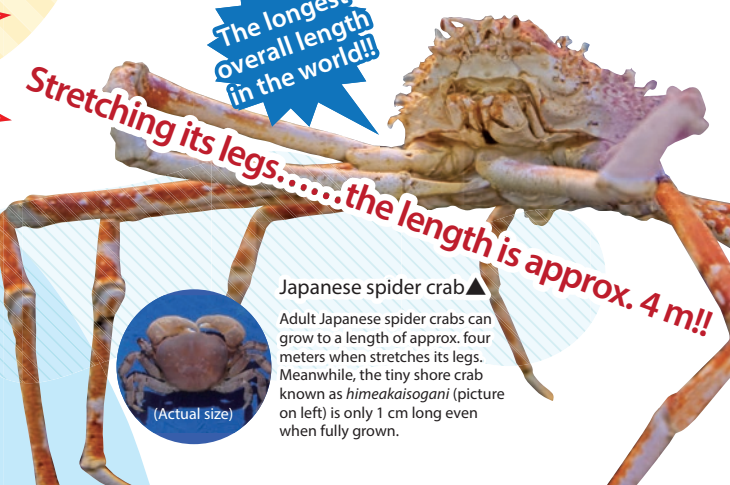
▲ Japanese mitten crab



▲ Shore swimming crab

These are only some of our crabs!

* Exhibits may change without notice.



The longest overall length in the world!!

Stretching its legs.....the length is approx. 4 m!!

Japanese spider crab▲

Adult Japanese spider crabs can grow to a length of approx. four meters when stretches its legs. Meanwhile, the tiny shore crab known as *himekaisogani* (picture on left) is only 1 cm long even when fully grown.



(Actual size)



In the Crab Aquarium



2 Fish in Tottori Aquarium

This is a water tank for fish living in the sea of Tottori, which is a must-see exhibit where you can see fishes with unique characteristics.

You can feed the fish!
(Only May – Oct.)
(100 yen/feeding)
From 3:30 p.m. on Saturdays, Sundays, and national holidays
* Feeding may be subject to cancellation.

3 Workshop Space

We hold many enjoyable events including crafting and hands-on events. Regular coloring and paper folding courses and the baby play yard are also popular. We lend you play equipment that you can use in the outdoor open space.



Highlighting crabs, Tottori Karo Crab Aquarium exhibits and introduces a variety of aquatic life so that visitors become more familiar with water creatures living in the sea and rivers. See them, touch them, and experience many events related to them to absorb the atmosphere in Tottori Prefecture.



1 Sea Creature Petting Pool

"Do starfish walk?" "How should I hold a crab?"
You can touch the sea creatures directly.



4 Outdoor Pool

Take off your shoes here to enjoy the pool with waves.
(Available May – Oct. * May be closed due to bad weather.)



5 Behind-the-scenes Facilities

Our staff raise water creatures and provide injured and diseased animals with medical care in this room. Visitors can peek across the counter at what goes on behind the scenes.



6 Special Exhibitions

Discover new sea animals in each aquarium with its own theme.

7 Matsubagani Sea Farm

We show you a deep-sea world where matsubagani crabs, a local specialty of Tottori, live. You can learn all about matsubagani crabs at the farm.



6 Exhibition Room

In this room, crabs are enjoyably showcased by displays. Enjoy learning about crabs by taking our Crab Quiz.



Try our Crab Quiz!
From today you are a crab expert!!